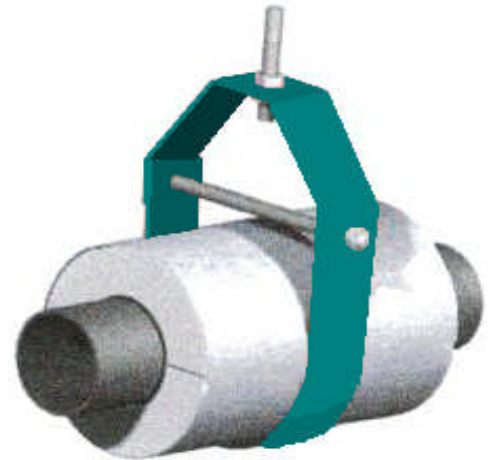


# T1000

## METAL SAME LENGTH AS CALSIL LENGTH

METAL GAUGE						
PIPE SIZE	INSULATION THICKNESS					
	1/2"	1"	1 1/2"	2"	2 1/2"	3"
1/2" TO 2"	24	24	24	24	24	24
2 1/2" TO 4"	20	20	20	20	20	20
5" TO 6"	x	20	20	20	20	16
8" TO 10"	x	16	16	16	16	16
12" TO 18"	x	16	16	16	16	16

INSULATION LENGTH						
PIPE SIZE	INSULATION THICKNESS					
	1/2"	1"	1 1/2"	2"	2 1/2"	3"
1/2" TO 2"	4"	4"	4"	4"	4"	6"
2 1/2" TO 4"	6"	6"	6"	6"	6"	9"
5" TO 6"	x	6"	6"	6"	6"	9"
8" TO 10"	x	6"	9"	9"	9"	9"
12" TO 18"	x	9"	12"	12"	12"	12"



<p><b>Application:</b></p> <p>Model T1000 is designed for use on:</p> <p>*Hot Water      *Cold Water *Steam            *Chilled Water</p> <p>Intended for installation on: *Band, ring or clevis pipe hanger For flat surface insulation on 6" pipe and up the T-3000 is recommended.</p> <p>Temperature Range: +40F to +1200F</p>	<p><b>Features:</b></p> <p>*Easy Installation *Overlapping galvanized sheet metal jacket *Minimizes heat-loss and/or *Minimizes condensation *Copper sizes available *1/2" insulation wall sizes will be made with rigid foam. *On small bore 1/2" insulation thickness and 1/2" copper x 1" Trymer 2000 XP foam insulation will be used.</p>
<p><b>Materials Used:</b></p> <p>*140+ PSI CALCIUM SILICATE MEETING ASTM C-795, C-533, AND E-84 FLAME SPREAD -0-      SMOKE DEVELOPED -0- *3M FASTBOND 49 WATER BASED ADHESIVE COMPLYING WITH NFPA-90A FLAME SPREAD -1.8-      SMOKE DEVELOPED -4- G-90 GALVANIZED STEEL SMALL CHECK PER ASTM A-527 FLAME SPREAD -0-      SMOKE DEVELOPED -0- *25 PSI TRYMER 2000XP FOAM MEETING ASTM D-1622, D-1621, AND E-84 FLAME SPREAD -25-      SMOKE DEVELOPED-50-</p>	

Maximum Load RATING (LBS)	
Pipe Size	In Clevis Hanger
1/2	40
3/4	45
1	65
1 1/4	80
1 1/2	110
2	140
2 1/2	200
3	250
3 1/2	300
4	350
5	450
6	550
8	750
10	1000
12	1200
14	1400
16	1600
18	1800