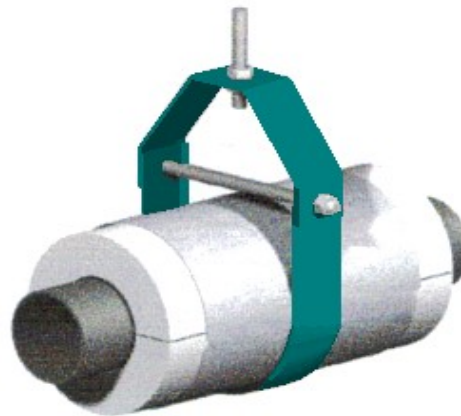


# T1000 URETHANE

METAL SAME LENGTH AS URETHANE LENGTH

METAL GAUGE				
PIPE SIZE	INSULATION THICKNESS			
	1/2"	1"	1 1/2"	2"
1/2" TO 2"	24	24	24	24
2 1/2" TO 4"	20	20	20	20
5" TO 6"	X	20	20	20
8" TO 10"	X	16	16	16



INSULATION LENGTH				
PIPE SIZE	INSULATION THICKNESS			
	1/2"	1"	1 1/2"	2"
1/2" TO 2"	4"	4"	4"	6"
2 1/2" TO 4"	6"	6"	6"	6"
5" TO 6"	X	6"	6"	6"
8" TO 10"	X	6"	9"	9"

<p><b>Application:</b> Model T1000 is designed for use on: *Cold Water      *Hot Water *Chilled Water</p> <p>Intended for installation on: *Band, ring or clevis pipe hanger For flat surface installation on 6" pipe and up, the T-3000 is recommended Temperature Range: -297 F to +300 F</p>	<p><b>Features:</b> *Easy Installation *Overlapping galvanized sheet metal jacket *Minimized heat-loss *Minimizes condensation *Copper sizes available</p>
<p><b>Materials Used:</b> *25 PSI TRYMER 2000XP FOAM MEETING ASTM D-1622, D-1621, AND E-85 FLAME SPREAD-25-      SMOKE DEVELOPED 1" = 50, 1" = 50, 1 1/2" = 55 *3M FASTBOND 49 WATER BASED ADHESIVE COMPLYING WITH NFPA-90A FLAME SPREAD -1.8-      SMOKE DEVELOPED -4- G-90 GALVANIZED STEEL SMALL CHECK PER ASTM A-527 FLAME SPREAD -0-      SMOKE DEVELOPED -0- All Service Jacket (ASJ) Meets C1136, Type 1,2,3,4 FLAME SPREAD -20-      SMOKE DEVELOPED -10-</p>	

MAXIMUM LOAD RATING (LBS)	
Pipe Size	In Clevis Hanger
1/2	40
3/4	45
1	65
1 1/4	80
1 1/2	100
2	120
2 1/2	140
3	160
4	220
5	250
6	275
8	350
10	400