

T2000 URETHANE

With ASJ Vapor Barrier

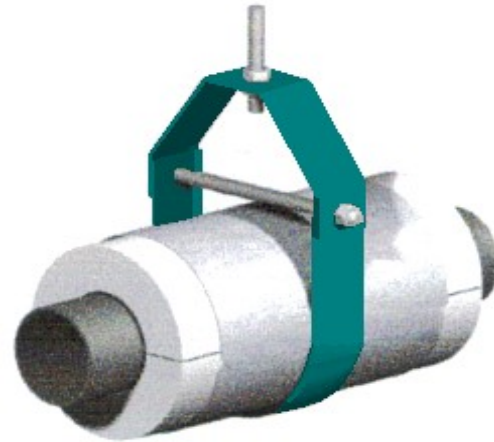
INSULATION and ASJ EXTEND 1" BEYOND STEEL

METAL GAUGE

PIPE SIZE	INSULATION THICKNESS			
	1/2"	1"	1 1/2"	2"
1/2" TO 2"	24	24	24	24
2 1/2" TO 4"	20	20	20	20
5" TO 6"	X	20	20	20
8" TO 10"	X	16	16	16

INSULATION LENGTH

PIPE SIZE	INSULATION THICKNESS			
	1/2"	1"	1 1/2"	2"
1/2" TO 2"	6"	6"	6"	6"
2 1/2" TO 4"	6"	6"	6"	6"
5" TO 6"	X	6"	6"	6"
8" TO 10"	X	6"	9"	9"



Application:

Model T2000 is designed for use on:

- *Cold Water
- *Hot Water
- *Chilled Water

Intended for installation on:

- *Band, ring or clevis pipe hanger

For flat surface installation on 6" pipe and up, the T-4000 is recommended

Temperature Range: -297 F to +300 F

Features:

- *Easy Installation
- *Overlapping galvanized sheet metal jacket
- *Minimized heat-loss
- *Minimizes condensation
- *Copper sizes available

Materials Used:

- *25 PSI TRYMER 2000XP FOAM MEETING ASTM D-1622, D-1621, AND E-85
- FLAME SPREAD-25- SMOKE DEVELOPED 1" = 50, 1" = 50, 1 1/2" = 55
- *3M FASTBOND 49 WATER BASED ADHESIVE COMPLYING WITH NFPA-90A
- FLAME SPREAD -1.8- SMOKE DEVELOPED -4-
- G-90 GALVANIZED STEEL SMALL CHECK PER ASTM A-527
- FLAME SPREAD -0- SMOKE DEVELOPED -0-
- All Service Jacket (ASJ) Meets C1136, Type 1,2,3,4
- FLAME SPREAD -20- SMOKE DEVELOPED -10-

MAXIMUM LOAD RATING (LBS)

Pipe Size	In Clevis Hanger
1/2	40
3/4	45
1	65
1 1/4	80
1 1/2	100
2	120
2 1/2	140
3	160
4	220
5	250
6	275
8	350
10	400