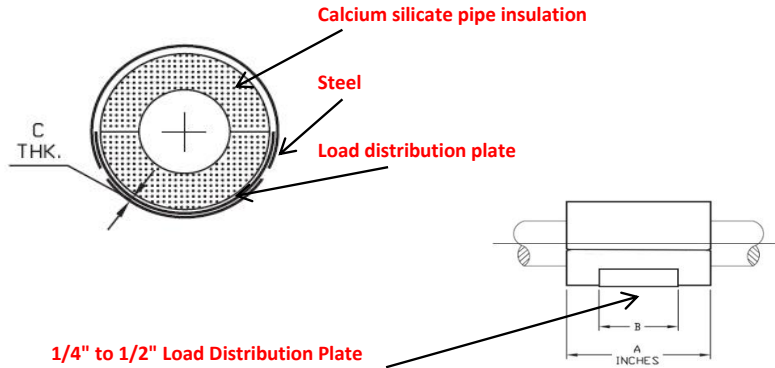


Product Data Sheet

T-5000 Calsil w/ Load Distribution Plate



Design Data	
Temperature Range: +40 F to +1200 F	
Insulation: Calcium Silicate (asbestos free)	
Jackets: Galvanized Steel ASTM A-527	
Glue: 3M Fastbond 49 (water based adhesive)	
Load Distribution Plate: Carbon steel ASTM A-36	
Load Rating: For process systems operating at 500 F or greater, multiply by the load rating in the chart by the following factors: 500 F = .90 750 F = .75, 1000 F = .50, 1200 F = .30 To develop maximum load rating, width of support surface should be at least 1/2 of dimension "B".	
<i>R Value per 1" thickness = 2.5</i> <i>K Factor @ 75 F = .38</i>	



1/4" to 1/2" Load Distribution Plate

Buy American Act Certified

***25/50 Rated Flame/Smoke Plenum Rated**

Intended for installation on rollers and flat surfaces

*A= Length of Insulation

*B= Length of Load Distribution Plate

*C= Thickness in Inches of Load Distribution Plate

Pipe Size	Maximum Load Ratings (lbs)		A	B	C	Max.Axial Travel (inches) on Pipe Roll +/-
	On Flat Surface	On Pipe Roll				
2 1/2	220	200	9	6	1/4	2
3	270	250	9	6	1/4	2
3 1/2	330	300	9	6	1/4	2
4	380	340	9	6	1/4	2
5	490	440	9	6	1/4	2
6	540	490	9	6	1/4	2
8	680	600	9	6	1/4	2
10	700	620	9	6	1/4	2
12	1000	890	12	9	3/8	3
14	1080	970	12	9	3/8	3
16	1190	1050	12	9	1/2	3
18	1340	1160	12	9	1/2	3
20	1400	1240	12	9	1/2	3

The load ratings represent average values obtained in accordance with accepted methods and are subject to normal manufacturing variations

- Dimensions and ratings are subject to change without notice -

For Use On: Steam - Chilled Water - Domestic Cold - Domestic Hot - Hot Water Heating

Design Features

Compact - Easy Installation - Minimizes Heat-loss and/or Condensation

Contact Information: 425-330-3765 Fax 360-925-3400 www.thermalpipeshields.com