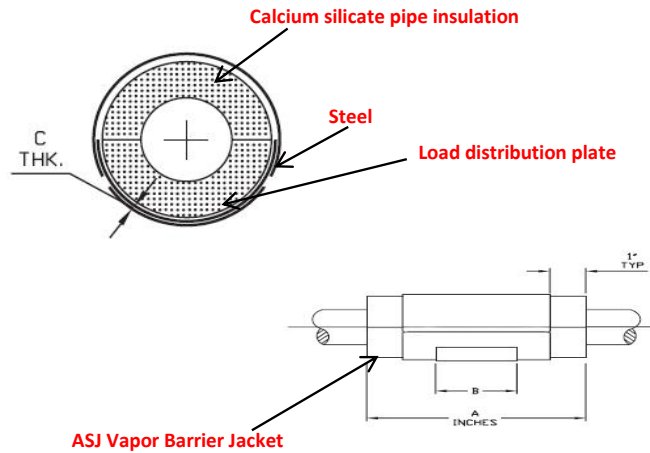


Product Data Sheet

T-6000 w/ ASJ and Load Distribution Plate

**THERMAL
PIPE
SHIELDS**

Design Data	
Temperature Range:	+40 F to +1200 F
Insulation:	Calcium Silicate (asbestos free)
Jackets:	Galvanized Steel ASTM A-527
Glue:	3M Fastbond 49 (water based adhesive)
Load Distribution Plate:	Carbon steel ASTM A-36
Load Rating:	For process systems operating at 500 F or greater, multiply by the load rating in the chart by the following factors: 500 F = .90 750 F = .75, 1000 F = .50, 1200 F = .30 To develop maximum load rating, width of support surface should be at least 1/2 of dimension "B".
<i>R Value per 1" thickness = 2.5</i> <i>K Factor @ 75 F = .38</i>	



Buy American Act Certified

***25/50 Rated Flame/Smoke Plenum Rated**

Intended for installation on rollers and flat surfaces

*A= Length of Insulation

*B= Length of Load Distribution Plate

*C= Thickness in Inches of Load Distribution Plate

Pipe Size	Maximum Load Ratings (lbs)		A	B	C	Max.Axial Travel (inches) on Pipe Roll +/-
	On Flat Surface	On Pipe Roll				
2 1/2	220	200	12	6	1/4	2
3	270	250	12	6	1/4	2
3 1/2	330	300	12	6	1/4	2
4	380	340	12	6	1/4	2
5	490	440	12	6	1/4	2
6	540	490	12	6	1/4	2
8	680	600	12	6	1/4	2
10	700	620	12	6	1/4	2
12	1000	890	14	9	3/8	3
14	1080	970	14	9	3/8	3
16	1190	1050	14	9	1/2	3
18	1340	1160	14	9	1/2	3
20	1400	1240	14	9	1/2	3

The load ratings represent average values obtained in accordance with accepted methods and are subject to normal manufacturing variations

- Dimensions and ratings are subject to change without notice -

For Use On: Steam - Chilled Water - Domestic Cold - Domestic Hot - Hot Water Heating

Design Features

Compact - Easy Installation - Minimizes Heat-loss and/or Condensation

Contact Information: 425-330-3765 Fax 360-925-3400 www.thermalpipeshields.com