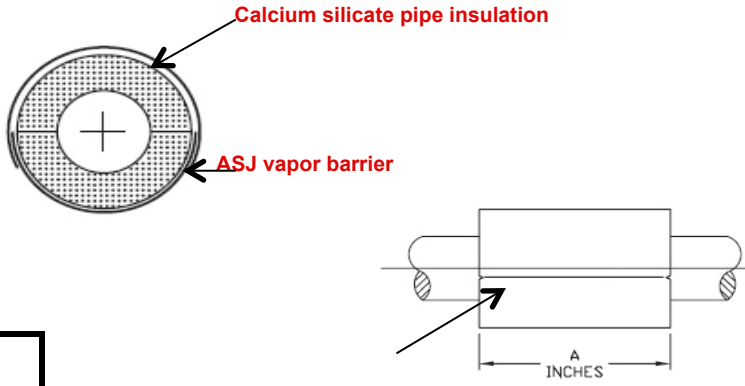


Product Data Sheet

**Calsil Inserts
w/ ASJ Vapor Barrier**



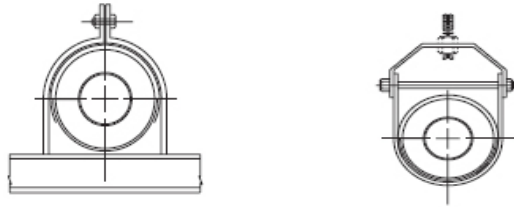
Design Data
Temperature Range: +40 F to +1200 F
Insulation: Calcium Silicate 100+ PSI ASTM C-553 Type 1
Vapor Barrier: ASJ (All Service Jacket) .02 Perm ASTM C1136
Glue: 3M Fastbond 49 (water based adhesive)
<i>R Value per 1" thickness = 2.5</i>
<i>K Factor @ 75 F = .38</i>



TPS recommends the following saddle gauges in the chart below.
Inserts are typically 9", 12" or 18" long.
All inserts and saddles are custom made to meet the varied mechanical engineers specifications.

STEEL SADDLES SOLD SEPARATELY

ASJ Vapor Barrier Jacket



Flat Surface

Roll

Intended for installation on flat surfaces or clevis pipe hangers

***25/50 Rated Flame/Smoke Plenum Rated**

Buy American Act Certified

Pipe Size	Maximum Load Ratings (lbs)		Recommended Gauge of Saddle						Copper Tubing Size OD
	On Flat Surface	In Clevis Hanger	1/2	1	1 1/2	2	2 1/2	3	
5/8	50	50	24	24	24	24	24	24	5/8
1/2	60	60	24	24	24	24	24	24	7/8
3/4	70	70	24	24	24	24	24	24	1 1/8
1	100	100	24	24	24	24	24	24	1 3/8
1 1/4	130	130	22	22	22	22	22	22	1 5/8
1 1/2	150	150	22	22	22	22	22	22	2 1/8
2	180	200	22	22	22	22	22	22	2 5/8
2 1/2	200	240	20	20	20	20	20	20	3 1/8
3	250	300	20	20	20	20	20	20	3 5/8
3 1/2	300	350	20	20	20	20	20	20	4 1/8
4	400	410	20	20	20	20	20	20	5 1/8
5	500	520	18	18	18	18	18	18	6 1/8
6	550	620	18	18	18	18	18	18	6
8	600	870	18	18	18	18	18	18	8
10	800	1190	16	16	16	16	16	16	10
12	1000	1400	16	16	16	16	16	16	12
14	1300	1620	16	16	16	16	16	16	14
16	1600	1830	16	16	16	16	16	16	16
18	1800	2000	16	16	16	16	16	16	18
20	2000	2200	16	16	16	16	16	16	20

The load ratings represent average values obtained in accordance with accepted methods and are subject to normal manufacturing variations

- Dimensions and ratings are subject to change without notice -

For Use On: Steam - Chilled Water - Domestic Cold - Domestic Hot - Hot Water Heating

Design Features

Compact - Easy Installation - Minimizes Heat-loss and/or Condensation

Contact Information: 425-330-3765 Fax 360-925-3400 www.thermalpipeshields.com

