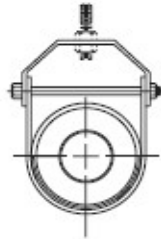
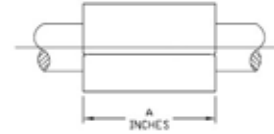
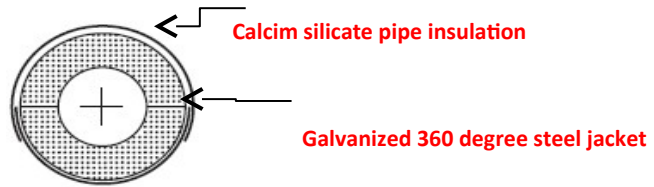


Product Data Sheet

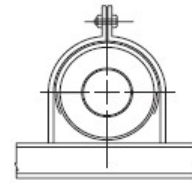
T-1000 CALSIL



Design Data	
Temperature Range: +40 F to +1200 F	
Insulation: Calcium Silicate 100+ PSI ATSM C-553 Type 1	
Jackets: G90 Galvanized Steel ASTM A-527	
Glue: 3M Fastbond 49 (water based adhesive)	
Load Rating: To develop maximum load rating, width of support surface should be at least 1/2 of dimension "A". For higher load ratings, see T-3000, T-5000	
R Value per 1" thickness = 2.5	
K Factor @ 75 F = .38	



CLEVIS HANGER



FLAT SURFACE

Intended for installation on flat surfaces or clevis pipe hangers

***25/50 Rated Flame/Smoke Plenum Rated**

Buy American Act Certified

Pipe Size	Maximum Load Ratings (lbs)		A = Insulation Length												Copper Tubing Size OD
			B = Gauge of Load Steel												
	On Flat Surface	In Clevis Hangar	1/2		1		1 1/2		2		2 1/2		3		
		A	B	A	B	A	B	A	B	A	B	A	B		
5/8	40	50	4	24	4	24	4	24	6	24	6	24	6	24	5/8
1/2	40	50	4	24	4	24	4	24	6	24	6	24	6	24	7/8
3/4	50	60	4	24	4	24	4	24	6	24	6	24	6	24	1 1/8
1	60	70	4	24	4	24	4	24	6	24	6	24	6	24	1 3/8
1 1/4	80	90	4	24	4	24	4	24	6	24	6	24	6	24	1 5/8
1 1/2	110	120	4	24	4	24	4	24	6	24	6	24	6	24	2 1/8
2	140	160	6	20	6	20	6	20	6	20	6	20	6	20	2 5/8
2 1/2	170	220	6	20	6	20	6	20	6	20	6	20	6	20	3 1/8
3	200	270	6	20	6	20	6	20	6	20	6	20	6	20	3 5/8
3 1/2	250	330	6	20	6	20	6	20	6	20	6	20	6	20	4 1/8
4	300	380	6	18	6	18	6	18	6	18	6	18	6	18	5 1/8
5	380	490	-	-	6	18	6	18	6	18	6	18	6	18	6 1/8
6	440	600	-	-	6	18	6	18	6	18	6	18	6	18	
8	490	810	-	-	6	16	6	16	6	16	6	16	6	16	
10	540	1080	-	-	9	16	9	16	9	16	9	16	9	16	
12	600	1300	-	-	9	16	9	16	9	16	9	16	9	16	
14	620	1510	-	-	12	16	12	16	12	16	12	16	12	16	
16	650	1730	-	-	12	16	12	16	12	16	12	16	12	16	
18	680	1940	-	-	12	16	12	16	12	16	12	16	12	16	
20	730	2160	-	-	12	16	12	16	12	16	12	16	12	16	

The load ratings represent average values obtained in accordance with accepted methods and are subject to normal manufacturing variations

- Dimensions and ratings are subject to change without notice -

For Use On: Steam - Chilled Water - Domestic Cold - Domestic Hot - Hot Water Heating

Design Features
Compact - Easy Installation - Minimizes Heat-loss and/or Condensation

Contact Information: 425-330-3765 Fax 360-925-3400 www.thermalpipeshields.com



FULL BOX QUANTITIES

T-1000 Calsil

PIPE SIZE	WALL 1/2"	WALL 1"	WALL 1 1/2"	WALL 2"
5/8"	40	48	27	10
1/2"	36	42	21	27
3/4"	30	42	21	27
1"	66	30	15	18
1 1/4"	48	30	36	18
1 1/2"	36	21	36	15
2 1/8"	36	21	36	15
2"	27	18	28	15
2 5/8"	27	18	28	15
2 1/2"	14	27	15	12
3 1/8"	14	27	15	12
3"	10	18	15	12
4 1/8"	27	15	12	6
4"	18	15	12	6
5"	15	12	6	6
6 1/8"	12	6	6	6
6"	12	6	6	6
8"	6	6	6	6
10"	6	4	4	2
12"	6	4	2	2