

Product

- F-4000 Phenolic Foam Insulated Pipe Support is fabricated from closed cell, fire and moisture resistant rigid thermal insulation.
- F-4000 features a factory adhered vapor retarder to be used for below ambient temperature process piping.
- F-4000 features a two-piece 360-degree steel shield with a DOUBLE THICK steel shield adhered at the load point. The insulation and vapor retarder extend 2" beyond the metal shield.
- Low thermal conductivity provides superior insulating performance for mechanical piping systems operating between 0°F and 220°F.
- See current Therma-Phen™ data sheet for full physical property and compliance listings.

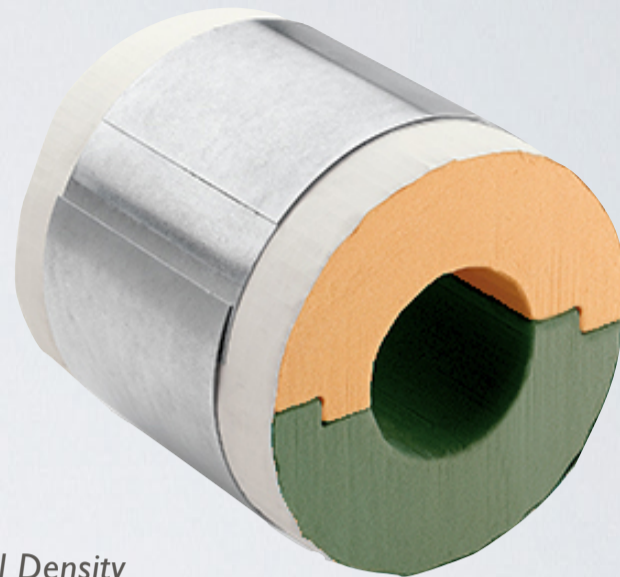
Features

- Therma-Phen™ phenolic foam is a cost-effective choice that provides excellent thermal protection and enhanced fire resistance compared to other insulations such as XPS, PIR or cellular glass.
- Meets 25/50 flame spread/smoke developed requirements for use within commercial building return air plenums.
- Phenolic Foam Inserts may utilize higher dual density bottom sections at load point.
- 5/8" to 2.5" pipe = 3 PCF nominal (45+ psi)
- 3 1/8" to 6" pipe = 5 PCF nominal (85+ psi)
- 8" to 12" pipe = 7 PCF nominal (135+ psi)
- Jacket roll formed from G90 galvanized steel per ASTM A-527

Benefits

- High compressive strength thermoset phenolic foam does not crush easily compared to low compressive strength insulations.
- Phenolic foam is less dusty, light weight and fabricates easily with hand tools.
- The DOUBLE THICK curved metal shield located at the load point of the insert allows for increased load distribution with any type of structural hanger including clevis and roller hangers or strut clamps.
- Finished OEM product arrives to jobsite fully assembled and ready to install at the pipe hangers.
- Buy American Act Certified

F-4000 Phenolic Foam Insulated Pipe Support



**Dual Density*

Applications

- F-4000 Phenolic Foam Insulated Pipe Supports are commonly used on chilled water, domestic cold, domestic hot, hot water heating, rain water leader, condensate drains and HVAC refrigeration piping in commercial buildings.
- Meets the compressive strength requirement of MSS SP-58 as a "high strength insert" allowing for reduced lengths and metal shield gauge through pipe hangers.
- Insulated pipe supports are more labor effective compared to the traditional method of the insulator lowering the clevis hanger, field notching the fiberglass pipe cover and then installing a wood or high density fiberglass block and curved metal shield at each structural pipe hanger.
- The most labor effective workflow involves the mechanical contractor installing pre-insulated 360 degree pipe supports at each structural hanger or clamp during the pipe installation process set at the correct elevations.

Safety

- Therma-Phen™ does not contain asbestos
- CFC/HCFC free with zero ozone depletion potential (ODP)
- Thermoset plastic resistant to many common chemicals
- Non-fibrous or itchy, odorless and low dust
- Insulating cold piping will prevent surface condensation, dripping and subsequent water related slip, trip and falls.
- Maintains installed thickness without crushing to provide long term insulating performance.
- Supports the cladding to provide continuous protection against crushing, moisture infiltration, loss of insulation performance and the resultant potential for corrosion under insulation (CUI).

Iron Pipe Size	Max Load (lbs.)			A = Insulation Length								B = Gauge of Load Steel				Copper Tubing Size
	Flat Surface	Roller Hanger	Clevis Hanger	1/2" thick		1" thick		1 1/2" thick		2' thick		2 1/2" thick		3" thick		
				A	B	A	B	A	B	A	B	A	B	A	B	
3/8	60	40	70	6	20	6	20	6	20	6	20	6	20	6	20	5/8
1/2	60	40	70	6	20	6	20	6	20	6	20	6	20	6	20	7/8
3/4	70	50	80	6	20	6	20	6	20	6	20	6	20	6	20	1 1/8
1	80	65	100	6	20	6	20	6	20	6	20	6	20	6	20	1 3/8
1 1/4	100	80	130	6	20	6	20	6	20	6	20	6	20	6	20	1 5/8
1 1/2	130	110	150	6	20	6	20	6	20	6	20	6	20	6	20	XX
2	180	130	200	6	18	6	18	6	18	6	18	6	18	6	18	2 1/8
2 1/2	200	150	275	6	18	6	18	6	18	6	18	6	18	6	18	2 5/8
3	220	180	300	6	18	6	18	6	18	6	18	6	18	6	18	3 1/8
3 1/2	230	210	380	6	18	6	18	6	18	6	18	6	18	6	18	XX
4	275	240	380	6	16	6	16	6	16	6	16	6	16	6	16	4 1/8
5	330	300	495	—	—	6	16	6	16	6	16	6	16	6	16	XX
6	440	400	605	—	—	6	16	6	16	6	16	6	16	6	16	6 1/8
8	635	—	800	—	—	9	16	9	16	9	16	9	16	9	16	XX
10	960	—	1160	—	—	9	16	9	16	9	16	9	16	9	16	XX
12	—	—	1400	—	—	9	16	9	16	9	16	9	16	9	16	XX

Full Box Quantities: F-4000 Phenolic Foam				
Pipe Size	1/2" thickness	1" thickness	1 1/2" thickness	2" thickness
5/8"	32	32	18	10
1/2"	22	28	14	27
3/4"	18	28	14	27
1"	40	20	10	18
1 1/4"	32	20	27	18
1 1/2"	28	14	27	15
2 1/8"	28	14	27	15
2"	20	12	21	15
2 5/8"	18	12	21	15
2 1/2"	14	27	15	12
3 1/8"	14	27	15	12
3'	10	18	15	12
4 1/8"	27	15	12	6
4"	18	15	12	6
5"	12	12	6	6
6 1/8"	12	6	6	6
6"	12	6	6	6
8"	4	4	4	4
10"	2	4	4	2