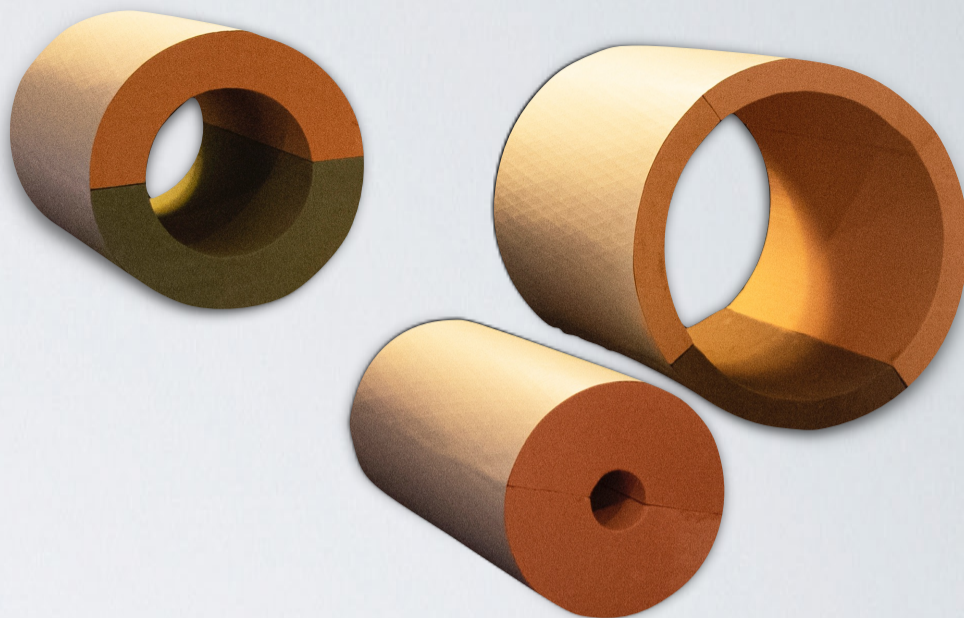


Product

- Therma-Phen™ Phenolic Foam Insert is fabricated pipe insulation with a factory laminated All Service Jacket (ASJ+) vapor retarder and a Self Sealing Lap (SSL) strip along the longitudinal joint.
- Meets ASTM E84 25/50 requirement
- See current Therma-Phen™ data sheet for full physical property and compliance listings.
- Must be used in conjunction with curved metal shield (sold separately) between the structural hanger and the insert to prevent damage.
- Phenolic Foam Inserts may utilize higher dual density bottom sections at load point (see chart)
- 5/8" to 2.5" pipe = 3 PCF nominal (45+ psi)
- 3 1/8" to 6" pipe = 5 PCF nominal (85+ psi)
- 8" to 12" pipe = 7 PCF nominal (135+ psi)



*ASJ+ Wrapped: Single & Dual Density

Standard 12" & 18" Long Inserts - Custom Lengths Available

Iron Pipe Size	Max Load (lbs.)		A = Phenolic Foam Nominal Density (PCF)						B = Recommended Gauge of Metal Shield						Copper Tubing Size
	Flat Surface	Clevis Hanger	1/2" thick		1' thick		1 1/2" thick		2' thick		2 1/2" thick		3" thick		
			A	B	A	B	A	B	A	B	A	B	A	B	
3/8	50	70	3	24	3	24	3	24	3	24	3	24	3	24	5/8
1/2	50	70	3	24	3	24	3	24	3	24	3	24	3	24	7/8
3/4	50	70	3	24	3	24	3	24	3	24	3	24	3	24	1 1/8
1	75	100	3	24	3	24	3	24	3	24	3	24	3	24	1 3/8
1 1/4	80	110	3	20	3	20	3	20	3	20	3	20	3	20	1 5/8
1 1/2	100	150	3	20	3	20	3	20	3	20	3	20	3	20	XX
2	165	190	3	20	3	20	3	20	3	20	3	20	3	20	2 1/8
2 1/2	175	275	3	18	3	18	3	18	3	18	3	18	3	18	2 5/8
3	200	300	5	18	5	18	5	18	5	18	5	18	5	18	3 1/8
3 1/2	225	325	5	18	5	18	5	18	5	18	5	18	5	18	XX
4	300	425	5	18	5	18	5	18	5	18	5	18	5	18	4 1/8
5	400	575	5	18	5	18	5	18	5	18	5	18	5	18	XX
6	525	750	5	18	5	18	5	18	5	18	5	18	5	18	6 1/8
8	880	1100	7	16	7	16	7	16	7	16	7	16	7	16	XX
10	1100	1400	7	16	7	16	7	16	7	16	7	16	7	16	XX
12	1500	1900	7	16	7	16	7	16	7	16	7	16	7	16	XX