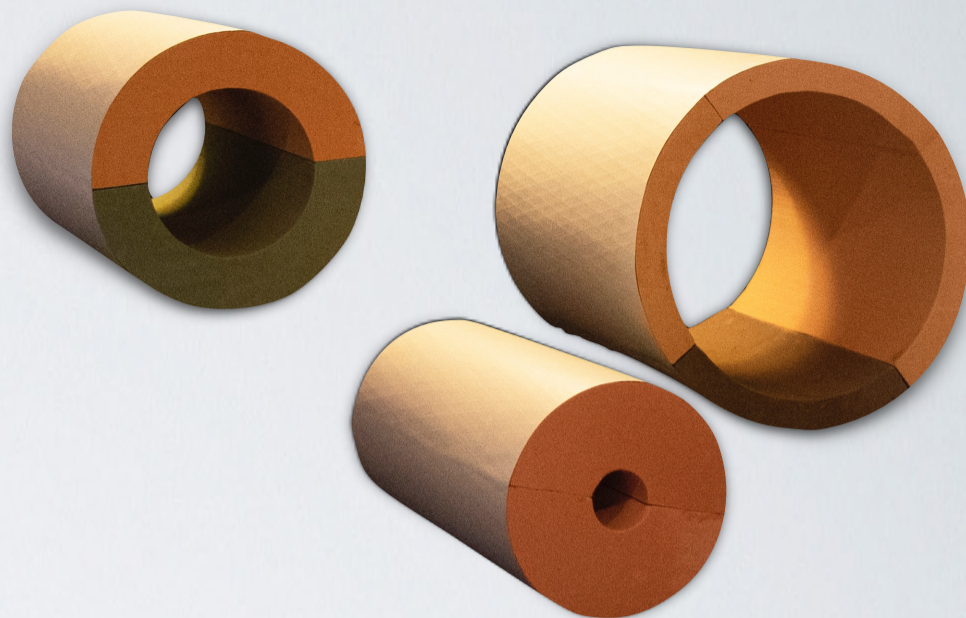


Product

- Therma-Phen[®] Phenolic Foam Insert is fabricated pipe insulation with a factory laminated All Service Jacket (ASJ+) vapor retarder and a Self Sealing Lap (SSL) strip along the longitudinal joint.
- See current Therma-Phen[®] data sheet for full physical property and compliance listings.
- Must be used in conjunction with curved metal saddles (sold separately) between the structural hanger and the insert to prevent damage.
- Phenolic foam inserts utilize the density of the bottom section at the load point in accordance with the following standard schedule:
- 5/8" to 2.5" pipe = 2.5 PCF nominal (32+ psi)
- 3 1/8" to 6" pipe = 5 PCF nominal (85+ psi)
- 8" to 12" pipe = 7 PCF nominal (135+ psi)



**ASJ+ Wrapped: Single & Dual Density*

Standard 12" & 18" Long Inserts - Custom Lengths Available

Iron Pipe Size	Max Load (lbs.)		A = Phenolic Foam Nominal Density (PCF)						B = Recommended Gauge of Metal Shield						Copper Tubing Size
	Flat Surface	Clevis Hanger	1/2" thick		1' thick		1 1/2" thick		2' thick		2 1/2" thick		3" thick		
			A	B	A	B	A	B	A	B	A	B	A	B	
3/8	50	70	2.5	24	2.5	24	2.5	24	2.5	24	2.5	24	2.5	24	5/8
1/2	50	70	2.5	24	2.5	24	2.5	24	2.5	24	2.5	24	2.5	24	7/8
3/4	50	70	2.5	24	2.5	24	2.5	24	2.5	24	2.5	24	2.5	24	1 1/8
1	75	100	2.5	24	2.5	24	2.5	24	2.5	24	2.5	24	2.5	24	1 3/8
1 1/4	80	110	2.5	20	2.5	20	2.5	20	2.5	20	2.5	20	2.5	20	1 5/8
1 1/2	100	150	2.5	20	2.5	20	2.5	20	2.5	20	2.5	20	2.5	20	XX
2	165	190	2.5	20	2.5	20	2.5	20	2.5	20	2.5	20	2.5	20	2 1/8
2 1/2	175	275	2.5	18	2.5	18	2.5	18	2.5	18	2.5	18	2.5	18	2 5/8
3	200	300	5	18	5	18	5	18	5	18	5	18	5	18	3 1/8
3 1/2	225	325	5	18	5	18	5	18	5	18	5	18	5	18	XX
4	300	425	5	18	5	18	5	18	5	18	5	18	5	18	4 1/8
5	400	575	5	18	5	18	5	18	5	18	5	18	5	18	XX
6	525	750	5	18	5	18	5	18	5	18	5	18	5	18	6 1/8
8	880	1100	7	16	7	16	7	16	7	16	7	16	7	16	XX
10	1100	1400	7	16	7	16	7	16	7	16	7	16	7	16	XX
12	1500	1900	7	16	7	16	7	16	7	16	7	16	7	16	XX

Technical Discussion

- "ANSI/MSS-SP 58" discusses protections saddles and shields. Section 7.6.3 states: "When used **without** high compressive strength inserts...shields shall be in accordance with Table A3."
- However, many engineers overlook general note #1 under Table A3: "The listed spacings and shield lengths are based on insulation with a compressive strength of 15 psi."
- The most commonly specified pipe insulation in commercial buildings is fiberglass which provides virtually no compressive resistance (<1 psi); and therefore should not be used in conjunction with metal shields. TPS recommends high strength inserts at all structural supports regardless of the pipe diameter.
- Section 7.6.5 states, "When pipe covering protection shields are used with high compressive strength inserts, the shield and the thickness shall be appropriate for the compressive strength of the insert material." This axiom provides an opportunity to reduce the gauge, length and cost of metal shields.
- Please contact TPS to discuss alternatives to antiquated practices such as field notching pipe cover with wood blocks that will reduce installation time, field labor costs and improve system performance.

Standard 12" & 18" Long Inserts - Custom Lengths Available

Full Carton Quantities (Standard Products): Phenolic Foam Insert			
Pipe Size	1" thickness	1 1/2" thickness	2" thickness
5/8"	56	42	25
1/2"	56	30	16
3/4"	56	30	16
1"	36	25	16
1 1/4"	36	20	16
1 1/2"	30	20	10
2 1/8"	25	20	10
2"	25	16	10
2 5/8"	25	16	10
2 1/2"	20	10	8
3 1/8"	16	10	8
3'	16	10	8
4 1/8"	10	9	5
4"	10	9	5
6 1/8"	5	4	4
6"	5	4	4
8"	8	5	4
10"	6	4	3
12"	4	3	2